



### Schrägbohrungen bis 53° einseitig

*slanted bore to 53° single-sided*

*Perçage oblique jusqu'à 53° d'un seul côté*

*Foro cieco inclinato fino a 53°*

| #          |               | für Füllstab<br>for bar<br>pour barre de remplissage<br>per tondo |
|------------|---------------|---|
| AN 1700310 | 401189177317  | 10,0 mm   |
| AN 1700315 | 4011879176853 | 12,0 mm   |
| AN 1700320 | 4011879177324 | 14,0 mm   |
| AN 1700325 | 4011879177331 | 16,0 mm   |
| AN 1700330 | 4011879177348 | 33,7 mm   |
| AN 1700335 | 4011879177355 | 42,4 mm   |
| AN 1700340 | 4011879177362 | 48,3 mm   |

### Schrägbohrungen bis 53° beidseitig

*slanted bore to 53° both-sided*

*Perçage oblique jusqu'à 53° deux seul côté*

*Foro passante inclinato fino a 53°*

| #          |               | für Füllstab<br>for bar<br>pour barre de remplissage<br>per tondo |
|------------|---------------|---|
| AN 1700350 | 4011879177379 | 10,0 mm   |
| AN 1700355 | 4011879177386 | 12,0 mm   |
| AN 1700360 | 4011879177393 | 14,0 mm   |
| AN 1700365 | 4011879177409 | 16,0 mm   |
| AN 1700370 | 4011879177416 | 33,7 mm   |
| AN 1700375 | 4011879177423 | 42,4 mm   |
| AN 1700380 | 4011879177430 | 48,3 mm   |

### Fließbohrung mit Gewinde

*floating bore with screw thread*

*Fluoperçage avec filet*

*Foro filettato flow drill*


| #          |               | Gewinde<br>screw head<br>filet<br>Filettatura |
|------------|---------------|---|
| AN 1700410 | 4011879174002 | M 6   |
| AN 1700420 | 4011879174019 | M 8   |

**Bohrung einseitig (Sackbohrung)**

*bore single-sided (pocket bore)*

*perçage unilatéral (perçage borgne)*

*Foro cieco*


| #          |  | für Füllstab<br>for bar<br>pour barre de remplissage<br>per tondo |
|------------|---|---|
| AN 1700510 | 4011879174026   | 10,0 mm   |
| AN 1700520 | 4011879174033   | 12,0 mm   |
| AN 1700530 | 4011879174040   | 14,0 mm   |
| AN 1700540 | 4011879174057   | 16,0 mm   |
| AN 1700545 | 4011879177447   | 33,7 mm   |
| AN 1700550 | 4011879177454   | 42,4 mm   |
| AN 1700555 | 4011879177461   | 48,3 mm   |

**Bohrung beidseitig (Durchgangsbohrung)**

*bore both-sided (penetration)*

*perçage des deux côtés (perçage borgne)*

*Foro passante*


| #          |  | für Füllstab<br>for bar<br>pour barre de remplissage<br>per tondo |
|------------|--|---|
| AN 1700560 | 4011879174064  | 10,0 mm   |
| AN 1700570 | 4011879174071  | 12,0 mm   |
| AN 1700575 | 4011879177478  | 14,0 mm   |
| AN 1700580 | 4011879174088  | 16,0 mm   |
| AN 1700585 | 4011879174485  | 33,7 mm   |
| AN 1700590 | 4011879174095  | 42,4 mm   |
| AN 1700595 | 4011879177492  | 48,3 mm   |

**Bohrung mit Einniethülse**

*floating bore with screw thread*

*Fluoperçage avec filet*

*Foro con inserto filettato*


| #          |  | Gewinde<br>screw head<br>filet<br>Filettatura |
|------------|---|---|
| AN 1700610 | 4011879174101   | M 6   |
| AN 1700620 | 4011879174118   | M 8   |

**Einpressen für Pfosten**

*press in for posts*

*emboutir pour poteau*

*Assemblaggio montanti a pressione*

| #          |  |  |
|------------|---|--|
| AN 1700650 | 4011879186401   | einpressen Kappe, <i>press in cap, emboutir bouchons, pressaggio flangia</i>     |
| AN 1700660 | 4011879186418   | einpressen Flansch, <i>press in flange, emboutir platine, pressaggio flangia</i> |

**Ø Rohr/ tube/ tube/tubo**

- Ø 33,7 mm
- Ø 42,4 mm
- Ø 48,3 mm
- Ø 60,3 mm
- Ø 76,1 mm

- I
- II
- III
- IV
- V

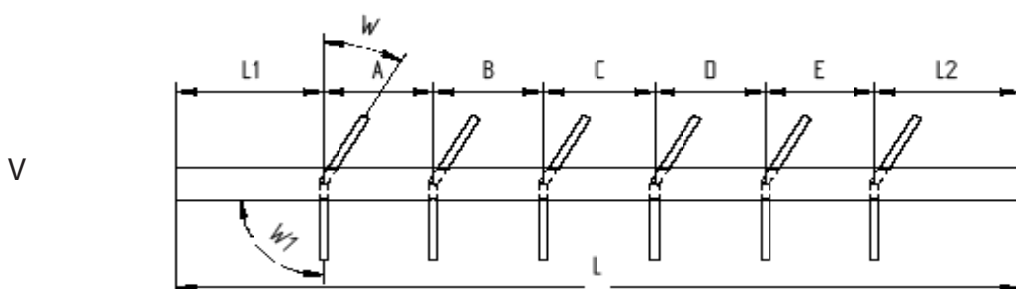
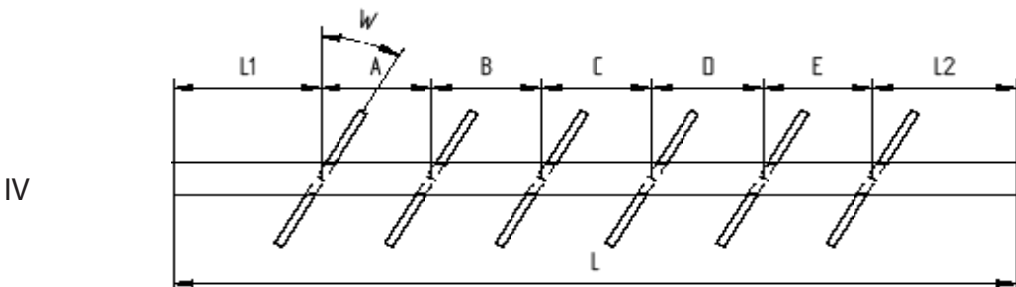
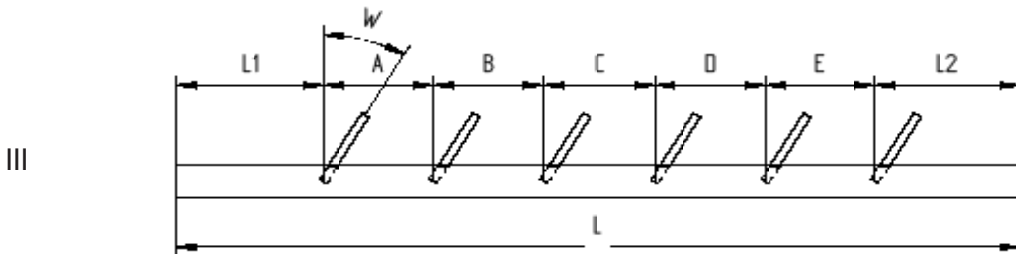
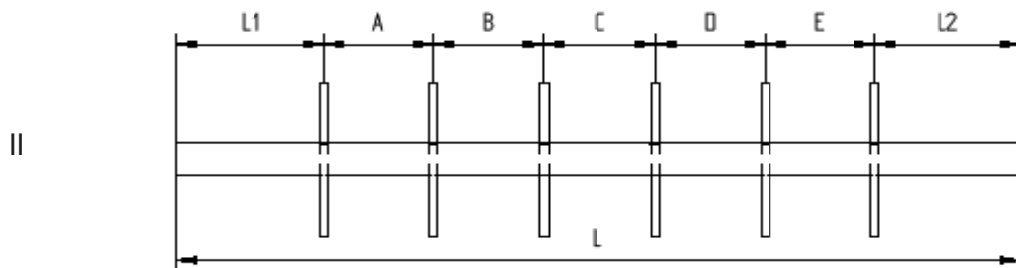
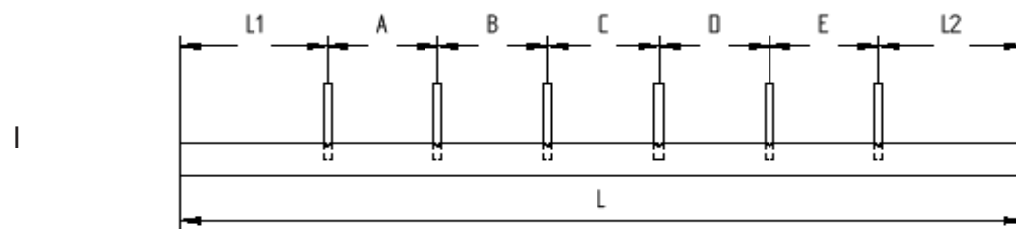
**Ø Bohrung/drilling/ perçage/ foro**

- Ø 10,0 mm
- Ø 12,0 mm
- Ø 16,0 mm
- Ø 33,7 mm
- Ø 42,4 mm
- Ø 48,3 mm

- M6
- M8

L \_\_\_\_\_ L1 \_\_\_\_\_ L2 \_\_\_\_\_ W \_\_\_\_\_ W1 \_\_\_\_\_

A \_\_\_\_\_ B \_\_\_\_\_ C \_\_\_\_\_ D \_\_\_\_\_ E \_\_\_\_\_ F \_\_\_\_\_





### Sägeschnitte gerade

*sawcut straight*

*coupe droite*

*Taglio dritto*

| #                 |               |  |
|-------------------|---------------|--|
| <b>AN 1700700</b> | 4011879167264 | für Edelstahlrohre bis 76,1mm<br><i>stainless steel tubes up to 76,1 mm</i><br><i>Tubes en inox jusqu'à 76,1 mm de diamètre</i><br><i>per tubi di acciaio inossidabile fino a Ø 76,1 mm</i>                  |
| <b>AN 1700800</b> | 4011879174132 | für Alu Profile bis 320 mm Querschnitt<br><i>for alum. sections straight to 320 mm</i><br><i>pour profil ALU droit jusqu'à section de 320 mm</i><br><i>per profili di alluminio fino a 320 mm di sezione</i> |
| <b>AN1700830</b>  | 4011879178031 | für Alu Profile mit Abdeckungen<br><i>for alum. profiles with covers</i><br><i>pour profil ALU avec cache platine</i><br><i>per profili di alluminio con copertura</i>                                       |

### Sägeschnitte Gehrung

*sawcut cross-section*

*coupe onglet jusqu'à section*

*Taglio jolly (45°)*

| #                 |               |  |
|-------------------|---------------|--|
| <b>AN 1700710</b> | 401187174125  | für Edelstahlrohre bis 76,1mm<br><i>stainless steel tubes up to 76,1 mm</i><br><i>Tubes en inox jusqu'à 76,1 mm de diamètre</i><br><i>per tubi di acciaio inossidabile fino a Ø 76,1 mm</i>                  |
| <b>AN 1700810</b> | 401187174149  | für Alu Profile bis 320 mm Querschnitt<br><i>for alum. sections straight to 320 mm</i><br><i>pour profil ALU droit jusqu'à section de 320 mm</i><br><i>per profili di alluminio fino a 320 mm di sezione</i> |
| <b>AN1700840</b>  | 4011879178048 | für Alu Profile mit Abdeckungen<br><i>for alum. profiles with covers</i><br><i>pour profil ALU avec cache platine</i><br><i>per profili di alluminio con copertura</i>                                       |
| <b>AN 1700900</b> | 4011879174156 | 15 % Fixkostenaufschlag<br><i>15 % fixed costs</i><br><i>15 % frais fixes</i><br><i>15% supplemento per lavorazione a misura</i>   |